

LEDRD Hardwired Fixture

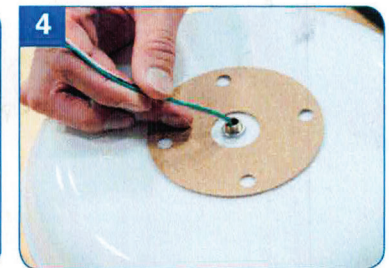
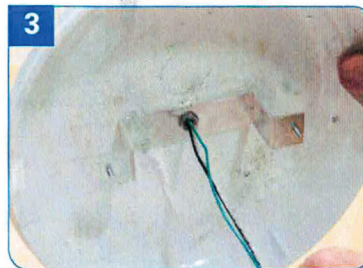
Components

1. Mounting Plate Bracket
2. Assembled Driver Plate (Wired driver, COB, Diffuser Lens)
3. Cork Gasket
4. Polycarbonate base
5. Acrylic Lens
6. Jam Nuts (2), Serrated Flange Nuts (2), 3/4" Hollow Threaded Spacer, Wire Nuts (3)



Step-by-Step Instructions

- 1 Open the circuit breaker supplying power to the existing lighting circuit and lock out in accordance with the organization's lockout tagout procedure (See Fig. 1).
- 2 Unpack the OWLEDHW5K components from their packaging. Ensure that all components are included and have not been damaged during shipping.
- 3 Apply one jam nut to end of the hollow threaded spacer and insert through fixture base. Attach mounting plate bracket on the interior of base with other jam nut (See Fig. 2)
- 4 Thread wires through cork gasket (See Fig. 3 and Fig. 4) and connect incoming, neutral and ground wire to the power supply according to the NEC and local codes.
- 5 Apply and tighten serrated flange nuts to the Chip On Board side of the driver plate (See Fig. 5).
- 6 Secure the clear lens dome to the polycarbonate base to complete the fixture assembly (See Fig. 6).
- 7 Reconnect power to the fixture at the electrical panel and test fixture.



Warning: These instructions are intended for use by qualified electricians. The installation of this luminaire is subject to compliance with the electrical code as established by the NEC (National Electric Code) and in accordance with the current edition of the IEEE Regulations for Electrical Installations. This luminaire must be installed by a qualified electrician. Field installers are responsible for recognizing specific site requirements and making adjustments to assure a complete, functional installation. Check with local and national codes for proper installation.

Warning: To prevent electrical shock, disconnect electrical supply before installation or servicing.